



Fibrecrete Preservation
Technologies, Inc.



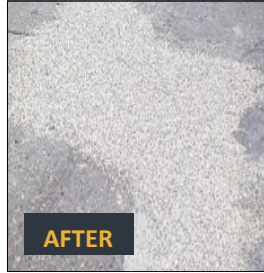
Fibrecrete

Concrete Repair

www.fibrecretept.com

Overview:

Fibrecrete is a hot applied flexible concrete repair. It is formulated with polymer modified resins, fiberglass, mineral fillers and high quality aggregates. This allows **Fibrecrete** to remain flexible yet strong enough to handle heavy traffic and the stresses of changing temperatures and seasons.



Fibrecrete is designed to replace traditional cementitious repairs which are prone to failure due to their stiffness. The installed product is a load transferring repair that has superior tensile strength and flexibility in comparison to rigid repairs. This allows **Fibrecrete** to accommodate limited joint and crack movement due to thermal expansion and contraction, and vibratory movements. **Fibrecrete** has exceptional resistance to water intrusion and to a broad range of salts, bases and organic materials, making the repair a long-term solution for highway maintenance projects.

Fibrecrete is an effective repair that can replace expensive full depth concrete repair programs. The long term affordability of this product also eliminates the need to repave to improve ride quality, allowing DOTs to shift their paving and FDCR dollars to more urgent areas.

System Benefits:

- Long term repair for concrete structures
- Will cure at low temperatures
- Excellent chemical and water resistance
- Easy to use



Material Specification:

Fibrecrete is a synthetic polymer modified resin binder factory blended with aggregates, fibers and mineral fillers and is supplied in 50 pound meltable bags.

* FTL Test Methods are available on request.

Property	Method	Requirement
Color	FTL 546-3	Grey
Tensile Strain	FTL 548-C	35% minimum @ 2"/minute
Cone Flow	FTL 549-C	7% maximum
Aggregate Settlement	FTL 551-C	3% maximum
Flexibility / Mandrel	FTL 550-C	Good to Better (no tearing at bend point)
Resilience	FTL 547-C	50% recovery
Recommended Application Temp.		300°F - 350°F
Specific Gravity		1.8 - 2.0

Construction Images:



Additional Information:

Technical & Advisory Service:

Further technical information may be obtained on request. Consultation is encouraged to ensure choice of materials selected is correct and optimised to suit in-service performance requirements.

Health & Safety:

FPT operates a strict health and safety policy and details are available on request.