



USL Group

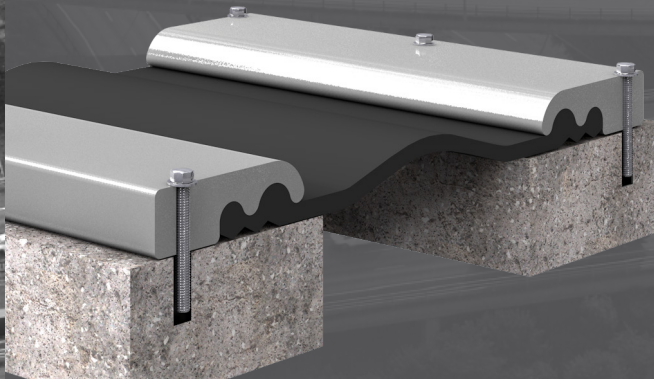
www.uslamerica.com



Fibrecrete Preservation
Technologies, Inc.

LJ Joints

Longitudinal Expansion Joints



Market Leaders in Expansion Joint Technology

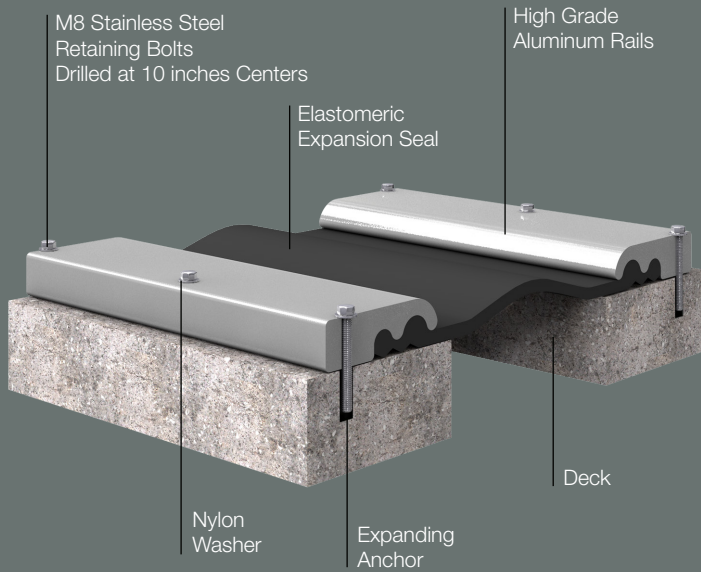
The USL Group provides a complete service to the civil engineering industry in the U.S. and worldwide for bridge deck protection which includes the supply and installation of expansion joints, bridge bearings and spray applied bridge deck waterproofing membranes.

USL supplies their products through a network of experienced approved contractors. Alternatively, they offer the client a full turnkey supply and installation service using their own site teams.

The company also manufactures and applies the PmB Bridgedeck Waterproofing System which is a rapid curing, spray applied polyurethane / polyurea hybrid membrane. All of USL's products have a proven track record worldwide and comply with the latest standards and specification in various regions of the world.

Through their technical department USL Group are able to offer a complete package of services to clients and will review a particular application from initial design to final installation to ensure the selection of the most appropriate and cost effective solution.





The product in brief

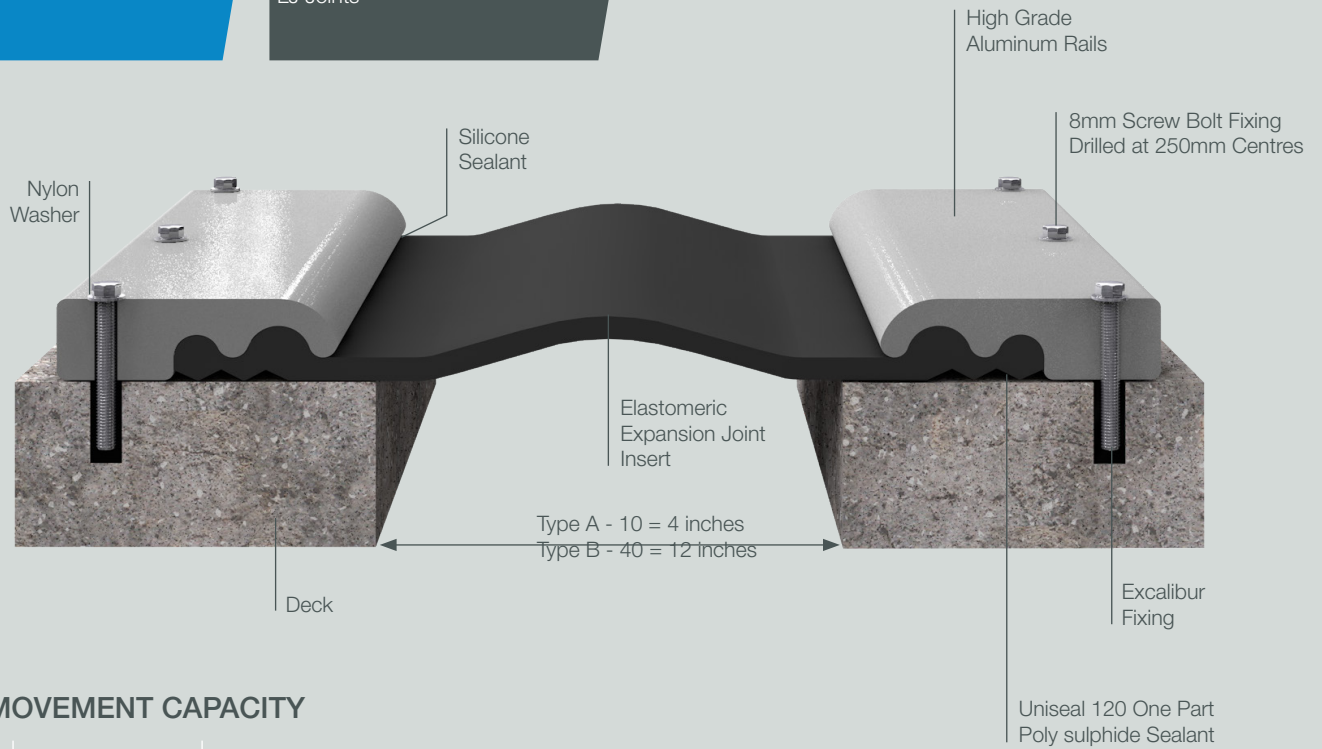
The 'LJ' Expansion Joint system has been specifically developed to provide an effective method of sealing soffit and longitudinal expansion gaps.

Designed to accommodate both longitudinal and vertical movement the 'LJ' Joint provides a continuous watertight seal to non-trafficked areas between structures and is available in a range of sizes to suit individual requirements.

The 'LJ' Expansion Joint system has the flexibility to be used as a waterproof cover joint or as a waterproof drainage under joint with the facility to install drainage outlets into the system when required.

Advantages

- Rapid installation
- Watertight seal
- Cost effective
- Low maintenance
- Long term solution
- Can be applied to concrete, block, brick and stone substrates

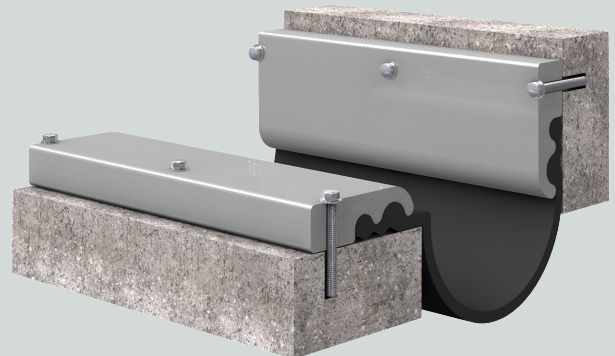
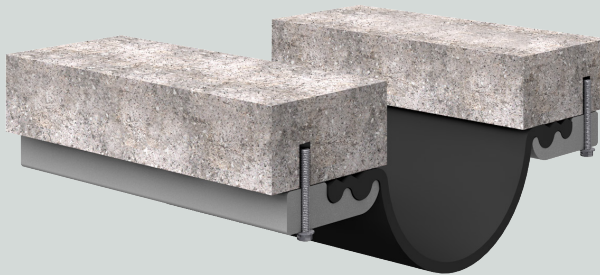
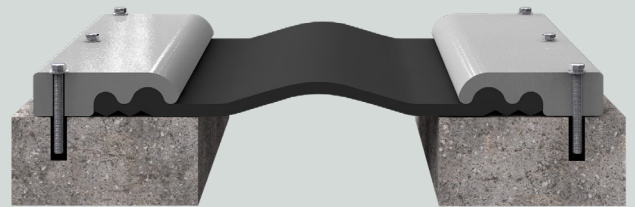


MOVEMENT CAPACITY

LJ	Horizontal	Vertical
A	± 2"	± 1.5"
B	± 4"	± 3"

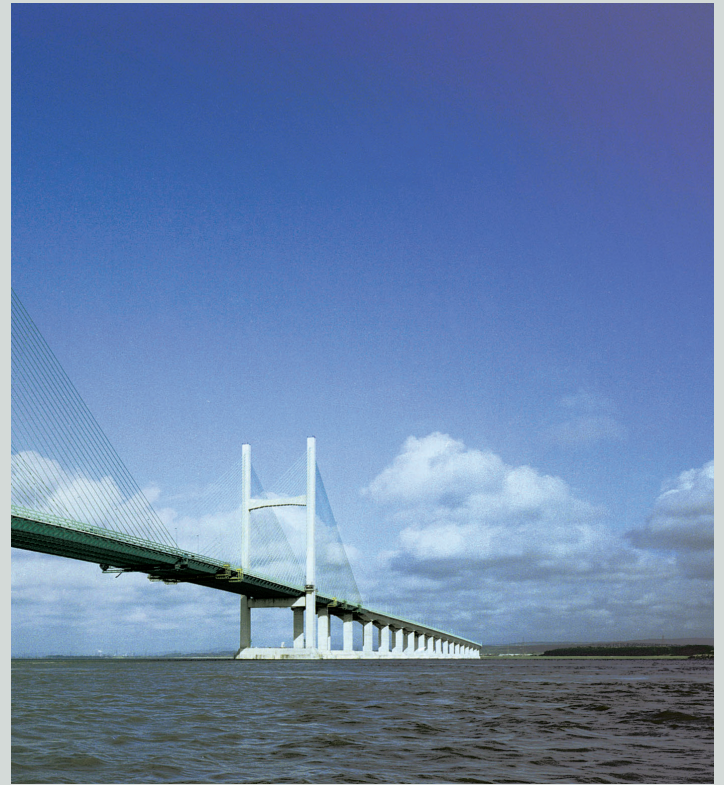
The product in brief

The applications for the LJ joint are widespread and include longitudinal joints between parallel structures, as a secondary joint system fixed to the soffit of structures where problems are usually experienced, or anticipated with ineffective mechanical expansion joints.





Installation	Specification	Additional Information
	Materials	Notes
<p>The LJ system is quick and easy to install consisting of a specially designed flexible elastomeric insert.</p> <p>The system is housed between high grade aluminum mounting rails which are anchored to the structures with M8 stainless steel retaining bolts drilled at 10" centers, providing a safe, efficient and economical method of sealing expansion gaps.</p>	<p>i. Carrier Rails The extruded high grade aluminum rails are supplied in standard lengths and are pre-drilled in our factory prior to delivery to site.</p> <p>ii. Elastomeric Insert The extruded EPDM insert is available in two sizes, each capable of accommodating a different range of movement. The inserts are supplied in coils of manageable lengths and jointed on site where required.</p> <p>iii. Drainage Outlets When the LJ Joint is used as a secondary joint system fixed to the deck soffit, flexible outlet tubes can be provided to drain the EPDM insert; these can be directed to discharge into the structural drainage system.</p>	<p>The colors used in the illustrations may not be indicative of the finished product.</p> <p>USL Group reserve the right to update and improve the 'LJ' Expansion Joint and its specification without notice and Engineers and Contractors should satisfy themselves that they have full and up to date information.</p> <p>PmB is a registered trade mark of USL Group.</p> <p>Technical & Advisory Service Further technical information may be obtained on request and consultation is encouraged to ensure choice of materials selected and detailing are optimised to suit in-service performance requirements and give economic solutions.</p> <p>Health & Safety USL Group operate a strict policy on health and safety and details are available on request.</p>



USL America Group Companies Product Range



Supplier of surface rehabilitation products for highways and bridges.
www.fibrecretept.com



Supplier of innovative and environmentally friendly bridge and highway drainage systems.
pds-plc.com



Supplier of concrete repair materials and protective coatings.
www.nufins.com



Installer of USL Group products and approved provider of Ekspan bearing and bridge jacking services.
www.appliedpolymerics.com



Manufacturer of polyurethane and acrylate grouts, epoxy injection resins and polyurea coatings that are optimally formulated to stop leaks, lift slabs, stabilize soils, fill voids, and protect concrete structures.
www.primeresins.com



Manufacturer of high quality bearings and movement joints.
www.ekspan.com



Supplier of ADA approved tactile paving systems.
www.visulsystem.com





www.uslamerica.com



Fibrecrete Preservation
Technologies, Inc.

Fibrecrete Preservation Technologies

131 St. James Way
Mount Airy, North Carolina 27030
USA

t: (336) 789 7259
f: (336) 789 7425
e: info@fibrecrept.com