



Concrete and Bridge  
Repair & Preservation  
Products

[www.fptinfrastructure.com](http://www.fptinfrastructure.com)



# About Us

FPT Infrastructure manufactures and distributes premium construction materials that are specifically designed for the repair, restoration, and maintenance of parking garages, highways, bridges, and other concrete structures.

Our portfolio includes materials for use in :

- Bridge Expansion Joint Repairs
- Hot Applied Flexible Repairs
- Structural Concrete Repairs
- Joint Sealing
- Structural Waterproofing
- High Friction Surfacing
- ADA Detectable Warning Surfaces

FPT Infrastructure can assist agencies in the design of new materials and specifications to fit their specific needs. Our products are used in every climate and temperature zone in the United States and will perform under the most extreme conditions– from summer in Laredo, Texas, to winter in Cleveland, Ohio, and everything in between.

With FPT Infrastructure, you not only get material expertise, you also get access to professionals who know how and why our products work. Our products perform year after year and provide excellent value to DOTs, municipalities, or any agency responsible for infrastructure preservation.

# Product Selector:

Rapid Curing Polymer Modified Cementitious Repair Mortar	Page 3
Flowable, Self-Compacting Micro Concrete	Page 4
High Build Lightweight Fibre Reinforced Mortar	Page 5
Polymer Modified Cementitious Concrete	Page 6
Spray Applied Cementitious Repair Mortar	Page 7
Rapid Setting Bedding Mortar	Page 8
High Strength Epoxy Mortar	Page 9
Fast-Setting High Strength Epoxy Mortar	Page 10
Epoxy Primer Tack Coat	Page 11



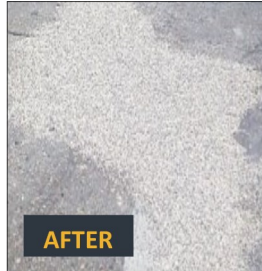
# Fibrecrete

## Hot-Applied Mastic Repair



### Description

**Fibrecrete** is a hot applied flexible concrete repair. It is formulated with polymer modified resins, fiberglass, mineral fillers and high quality aggregates. This allows **Fibrecrete** to remain flexible yet strong enough to handle heavy traffic and the stresses of changing temperatures and seasons.



**Fibrecrete** is designed to replace traditional cementitious repairs which are prone to failure due to their stiffness. The installed product is a load transferring repair that has superior tensile strength and flexibility in comparison to rigid repairs. This allows **Fibrecrete** to accommodate limited joint and crack movement due to thermal expansion and contraction, and vibratory movements. **Fibrecrete** has exceptional resistance to water intrusion and to a broad range of salts, bases and organic materials, making the repair a long-term solution for highway maintenance projects.

**Fibrecrete** is an effective repair that can replace expensive full depth concrete repair programs. The long term affordability of this product also eliminates the need to repave to improve ride quality, allowing DOTs to shift their paving and FDCR dollars to more urgent areas.

### System Benefits:

- Long term repair for concrete structures
- Will cure at low temperatures
- Excellent chemical and water resistance
- Easy to use



### Material Specification:

**Fibrecrete** is a synthetic polymer modified resin binder factory blended with aggregates, fibers and mineral fillers and is supplied in 50 pound meltable bags.

Property	Method	Requirement
Color	FTL 546-C	Grey
Tensile Strain	FTL 548-C	35% minimum @ 2"/minute
Cone Flow	FTL 549-C	7% maximum
Aggregate Settlement	FTL 551-C	3% maximum
Flexibility / Mandrel	FTL 550-C	Good to better (no tearing at
Resilience	FTL 547-C	50% recovery
Recommended Application Temperature		300°F—350°F
Specific Gravity		1.8 - 2.0

### FPT Infrastructure

**Head Office:** 401 Old US 52 South, Mount Airy, NC 27030, USA  
t: (336) 789 7259 f: (336) 789 7425 w: [www.fptinfrastructure.com](http://www.fptinfrastructure.com)  
e: [info@fptinfrastructure.com](mailto:info@fptinfrastructure.com)

*FPT Infrastructure is a Division of Fibrecrete Preservation Technologies Inc*

# Samiscreed

## Asphalt Mastic Repairs

### Description

**Samiscreed** is a hot applied flexible repair for asphalt pavement defects. It is a highly modified asphalt binder that is premixed with small aggregate. This aggregate provides more structural integrity than traditional crack sealers. Because of its flexibility it will be less likely to crack under stress like HMA repairs and cold mixes.

Samiscreed is a one-part-screed-applied system, suitable for all types of bituminous surface course including surfacing. Its skid resistance is designed to equal or exceed the surrounding surface.

### System Benefits

Providing exceptional resistance to wear combined with inherent flexibility. **Samiscreed** offers:

- Application throughout the year subject only to minimum temperatures and dry surface conditions
- Rapid curing: traffic-ready within 30 minutes of application
- Cost effective
- Less preparation and small installation crews compared to traditional methods
- High friction grades available
- Extends service life of asphalt, reducing maintenance costs
- Effective sealing properties to stop ingress of water
- Flexible, enduring, skid resistant finish.

### Preparation:

Thoroughly clean the crack or joint recess and surrounding area and dry using hot compressed air.

### Application:

Heat to between 340°F - 390°F. Fill the prepared crack, joint, recesses area, or pothole with **Samiscreed**. For potholes deeper than 1 inch, double washed and dried bulking aggregates are recommended. The finished repair is allowed to cool before opening to traffic. This will typically take between 15 and 30 minutes, depending on the ambient temperature.



Property	Method	Requirement
Color	FTL 546-C	Black
Tensile Strain	FTL 548-C	35% minimum @ 2"/minute
Cone Flow	FTL 549-C	7% maximum
Aggregate Settlement	FTL 551-C	3% maximum
Flexibility / Mandrel	FTL 550-C	Good to better (no tearing at bend point)
Resilience	FTL 547-C	50% recovery
Recommended Application Temperature		300°F—350°F
Specific Gravity		1.8 - 2.0

### FPT Infrastructure

**Head Office:** 401 Old US 52 South, Mount Airy, NC 27030, USA  
t: (336) 789 7259 f: (336) 789 7425 w: [www.fptinfrastructure.com](http://www.fptinfrastructure.com)  
e: [info@fptinfrastructure.com](mailto:info@fptinfrastructure.com)

FPT Infrastructure is a Division of Fibrecrete Preservation Technologies Inc

# Bridge Expansion Joints

## High Build, Lightweight Fiber-Reinforced Mortar

### Description

FPT Infrastructure is a market leader in the manufacture, supply and installation of expansion joints which have been carefully developed to provide safe, efficient and economical methods of sealing construction gaps. Visit [fptinfrastructure.com](http://fptinfrastructure.com) for detailed product information.

### Joint types:

#### Asphaltic plug joints:

Systems designed to repair asphalt overlay bridge expansion joints that are failing due to the joint opening reflecting through the asphalt pavement.

#### Transflex joints:

Comprised of steel angles and a steel bridging plate system encased in a flexible elastomer. They are supplied in module lengths designed to be bolted to the structural concrete on either side of the expansion gap.

#### Roller shutter joints:

Recommended for dynamic structures with movements over 31 inches to achieve maximum safety and comfort for traffic (avoiding washboard effects and danger of skidding), noise prevention, the stability of the structure, and fatigue strength.

#### Open type joints:

This type should be used for railway bridges for movements greater than 10 inches. They should be positioned in the vicinity of the expansion devices for continuously welded rails.

#### BEJ expansion joints:

A surface mounted mechanical system, with an elastomeric insert between two metal runners / carrier rails. Set into a rapid curing resin compound known as Britflex® Resin Mortar.

#### Multi-element joints:

Often referred to as modular joints, these are made up of modular lengths of steel beams with a gap between each beam fitted and locked together with watertight elastomeric seal profiles.

#### Single-seal element joints:

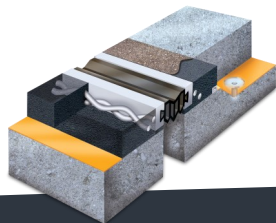
These types of expansion joints are suitable for installation in shallow bridge decks and parking decks, or as a replacement joint during bridge maintenance work.



#### T-Mat joints:

Consists of a solid armoured expansion mat made of a high quality chloroprene with metal reinforcements (T-bars).

The expansion joint will not only allow for horizontal movement on either side of the joint but will also allow for transverse and vertical relative movements of adjacent bridge decks.



### FPT Infrastructure

**Head Office:** 401 Old US 52 South, Mount Airy, NC 27030, USA

t: (336) 789 7259 f: (336) 789 7425 w: [www.fptinfrastructure.com](http://www.fptinfrastructure.com)

e: [info@fptinfrastructure.com](mailto:info@fptinfrastructure.com)

*FPT Infrastructure is a Division of Fibrecrete Preservation Technologies Inc*



# Bridge Bearings

## Superior quality bearings

### Description

FPT Infrastructure offers a wide variety of bridge bearings for an array of scenarios. To discuss your needs regarding load capacity, movement types and more, call us at 1-336-789-7259.

### Bearing types:

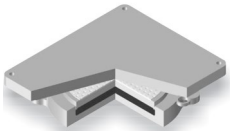
#### KE series bearings:

Multi-axis rotation bearings in fixed, constrained and free configurations to support loads up to 10,405 Kips.



#### KA series bearings:

Multi-axis rotation bearings in fixed, constrained and free configurations to support loads up to 6,744 Kips.



#### Spherical bearings:

Spherical structural bearings designed to permit angular rotations around any axis.



#### Fixed & Guided bearings:

Structural bearings for locating structures, designed to react only for horizontal loads up to 517 Kips.



#### Line Rocker bearings:

A range of line rocker fixed and PTFE sliding bearings to support loads of 22 - 1911 Kips.



#### Link bearings:

A bearing suitable for application on RO-RO and loading ramps for ships. It is used for its high rotation, transverse stiffness and long life.



### FPT Infrastructure

**Head Office:** 401 Old US 52 South, Mount Airy, NC 27030, USA

t: (336) 789 7259 f: (336) 789 7425 w: [www.fptinfrastructure.com](http://www.fptinfrastructure.com)

e: [info@fptinfrastructure.com](mailto:info@fptinfrastructure.com)

*FPT Infrastructure is a Division of Fibrecrete Preservation Technologies Inc*

# Structural Concrete Repairs

## Repair mortars and protective coatings

### Description

All concrete will be subject to chemical and physical change. However, one of the main causes of concrete failure is due to reinforcement corrosion. The following materials can be used for repairs to reinstate the structural integrity of defective areas.

### Products:

#### Deck Repair Rapid:

A rapid-curing polymer modified cementitious mortar ideal for use where coatings will soon be applied.



#### Nupatch bedding mortar:

Single-component, rapid-setting, cementitious bedding mortar for interior and exterior use.



#### Nugrout Flowable Concrete:

A single-component, polymer-modified, flowable cementitious repair mortar that contains a corrosion inhibitor to protect reinforcing steel.



#### Epicon mortar:

A versatile epoxy mortar with excellent adhesive bond, high strength, and high abrasion- and chemical-resistance.



#### Nucem HB Mortar:

A fast setting, single component, polymer modified repair mortar for restoring spalled or damaged concrete in over-head and vertical locations.



#### Nucem primer:

A water-based epoxy bonding and anti-corrosion coating to bond new cement-based products to existing concrete and steel.



#### Spraycem 301:

Pre-packed, one-component, polymer-modified cementitious spray repair mortar for spray or hand trowel applications.



#### Texacrete Elastomeric Concrete:

Texacrete is suitable for use on pedestrian or vehicular traffic areas. Texacrete is a three-component polyurethane resin that may be used as an 'unfilled' two-part system for narrow gaps or a 'filled' three-part system (as standard) for wider gaps.



### FPT Infrastructure

Head Office: 401 Old US 52 South, Mount Airy, NC 27030, USA

t: (336) 789 7259 f: (336) 789 7425 w: [www.fptinfrastructure.com](http://www.fptinfrastructure.com)

e: [info@fptinfrastructure.com](mailto:info@fptinfrastructure.com)

FPT Infrastructure is a Division of Fibrecrete Preservation Technologies Inc

# Waterproofing & Protective Coatings

## Description

**Pitchmastic PmB**, the global market leading structural protection specialist, offers a comprehensive range of high performing waterproof products to protect structural assets from environmental & chemical attack, water ingress and corrosion.

## Products:

### Covercrete:

A decorative, waterborne acrylic coating designed to drastically “reduce the diffusion rate of carbon dioxide into concrete and to provide a highly durable, weather-resistant surface that will maintain it’s anti-carbonation properties over many years.



These solutions combined cover applications for highly exposed concrete structures, building envelopes, parking garages, highway and pedestrian bridges, stadiums, concrete water towers, rail & bus stations, and more. Visit [fptinfrastructure.com](http://fptinfrastructure.com) for more information.

### Proflex A:

A high-build, waterborne elastomeric waterproof coating designed to impart a decorative, semi-matte protective film to concrete. Protects concrete from the ingress of rainwater and waterborne pollutants and minimizes the possibility of carbonation.



### DeckProtect+ Parking Deck Coating Systems:

A range of cold liquid-applied systems that use the most effective technologies in parking garage protection. All DeckProtect+ systems are designed to be aesthetically pleasing, safe, and user-friendly. Offered in conjunction with Prime Resins Inc.

- **DeckProtect+ PmB** - Fully protective waterproof and surface coating system for exposed parking decks and floors directly above accommodation.
- **DeckProtect+ Rapidflex** - Rapid curing surface coating system for intermediate and underground parking decks
- **DeckProtect+ EPX** - Durable epoxy-based surface coating system for intermediate and underground parking decks



## FPT Infrastructure

**Head Office:** 401 Old US 52 South, Mount Airy, NC 27030, USA

t: (336) 789 7259 f: (336) 789 7425 w: [www.fptinfrastructure.com](http://www.fptinfrastructure.com)

e: [info@fptinfrastructure.com](mailto:info@fptinfrastructure.com)

*FPT Infrastructure is a Division of Fibrecrete Preservation Technologies Inc*



# Joint Sealant

## Easy to apply one-part product

### Product:

#### Uniseal 150:

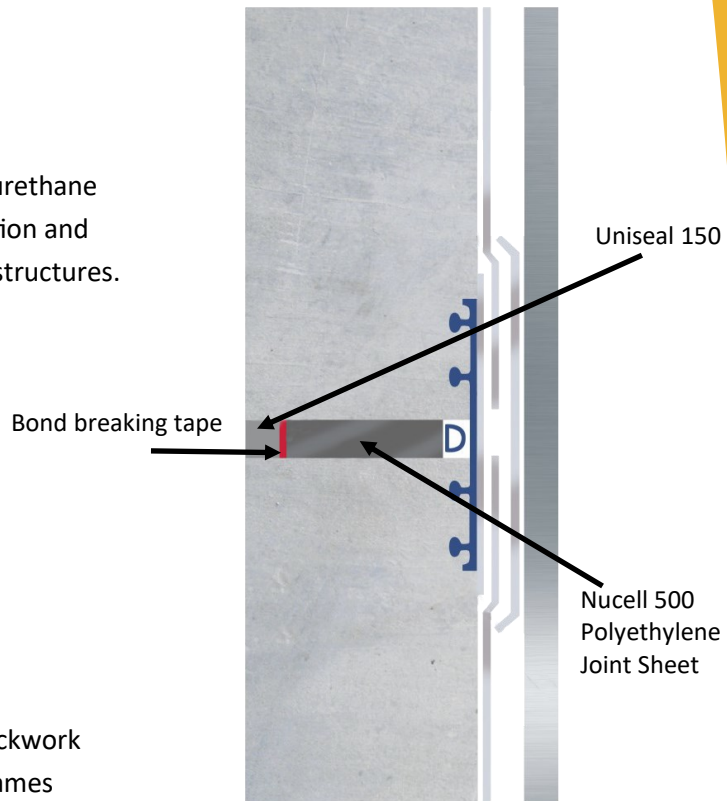
A high performance, one-part, low modulus polyurethane sealant specifically developed for sealing contraction and expansion joints in civil engineering and building structures.

### System Benefits

- Easy to apply one-part product
- Excellent acoustic ratings
- Excellent resistance to weathering
- Permanently flexible
- Low odor
- 25% total joint movement

### Applications

- Movement joints in concrete, masonry, and blockwork
- Perimeter pointing around window and door frames
- Cladding seals within lightweight modular systems
- Vertical movement joints in columns and perimeter walls
- Acoustic jointing



### FPT Infrastructure

**Head Office:** 401 Old US 52 South, Mount Airy, NC 27030, USA

t: (336) 789 7259 f: (336) 789 7425 w: [www.fptinfrastructure.com](http://www.fptinfrastructure.com)

e: [info@fptinfrastructure.com](mailto:info@fptinfrastructure.com)

*FPT Infrastructure is a Division of Fibrecrete Preservation Technologies Inc*

# ADA Detectable Warning Surfaces

Flexible ADA detectable tiles that last seven times longer

## Product:

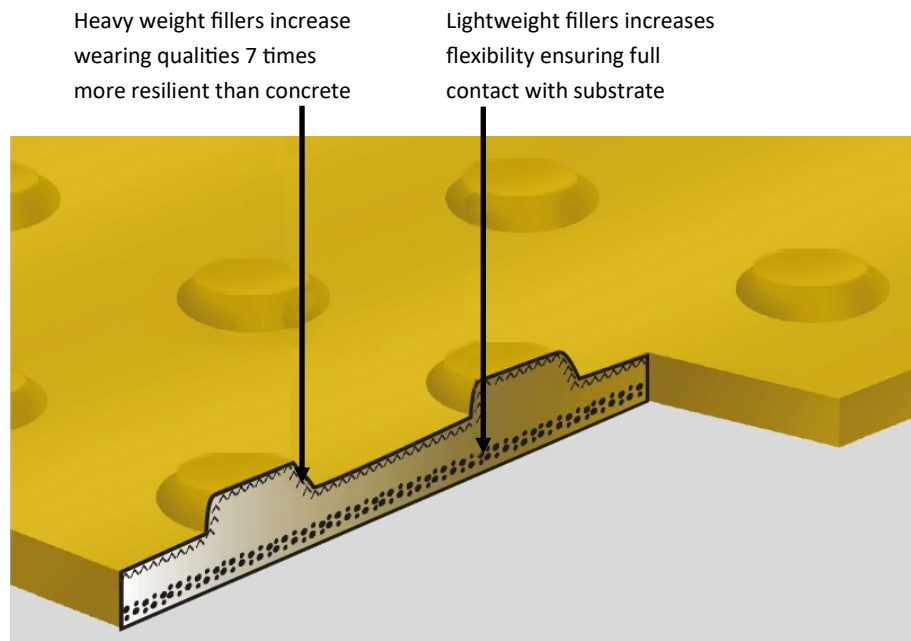
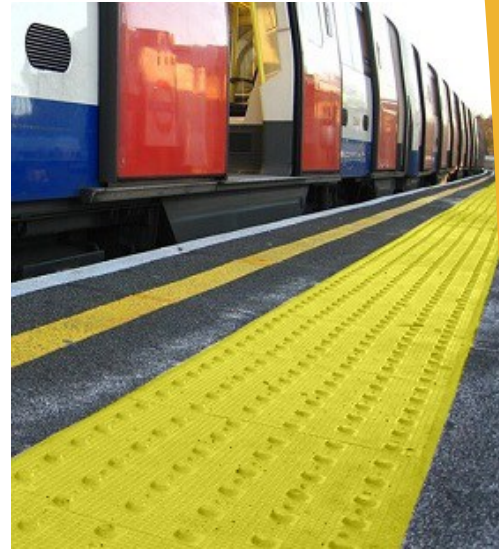
### Visul Systems:

ADA detectable warning surfaces are required at pedestrian crosswalks and on transit platforms to alert visually impaired pedestrians. Visul surface mounted tactile paving tiles incorporate raised profiles to warn people that they are approaching a change in elevation. These are essential, life-saving tiles.

**Visul ADA** detectable warning surface tiles offer faster, cleaner installation and superior durability. These flexible tiles last seven times longer than others on the market. Edge to edge adhesives means no delamination or broken edges. This fully supported base means no cracking. Their durability means Visul tiles are more cost-effective in the long run.

### System Benefits

- Faster install
- Cleaner install
- More durable



## FPT Infrastructure

**Head Office:** 401 Old US 52 South, Mount Airy, NC 27030, USA

t: (336) 789 7259 f: (336) 789 7425 w: [www.fptinfrastructure.com](http://www.fptinfrastructure.com)

e: [info@fptinfrastructure.com](mailto:info@fptinfrastructure.com)

*FPT Infrastructure is a Division of Fibrecrete Preservation Technologies Inc*

# Matacryn®

## Seamless Waterproofing Membranes & Wearing Course Systems

### Description

**Matacryn** partners with infrastructure owners and civil engineering experts across the globe to improve the durability, performance and service life of infrastructure assets. Our Matacryn systems deliver superior performance using polyurethane methyl methacrylate (PUMA) technology). This unique chemistry prevents the degradation of deck surfaces on new bridge structures and restoration projects.

### Key Features of a Matacryn system:

- Available in spray and manually applied grades to meet job site conditions.
- Installs at a wide range of ambient and substrate temperatures -4 to 95 °F (-20 to 35 °C) to extend the construction season.
- Rapid set time promotes fast installation, lower labor costs and efficient handover to next construction phase.
- Weather resistant and ready for use 60 minutes after completion of application.
- VOC compliant; contains no solvents.
- Chemically inert; does not require hazmat precautions for disposal once cured.
- No heating of resins or special application equipment required.
- Matacryn systems are only installed by authorized and approved contractors

**Matacryn products provide solutions for infrastructure applications including spanning the bridges, tunnels and highways sectors.**



### FPT Infrastructure

**Head Office:** 401 Old US 52 South, Mount Airy, NC 27030, USA

t: (336) 789 7259 f: (336) 789 7425 w: [www.fptinfrastructure.com](http://www.fptinfrastructure.com)

e: [info@fptinfrastructure.com](mailto:info@fptinfrastructure.com)

*FPT Infrastructure is a Division of Fibrecrete Preservation Technologies Inc*





**Fibrecrete Preservation Technologies**

401 Old US 52 South,  
Mount Airy, NC  
27030  
USA

**t: (336) 789 7259**

**f: (336) 789 7425**

**E: [info@fibrecretept.com](mailto:info@fibrecretept.com)**

**W: [www.fptinfrastructure.com](http://www.fptinfrastructure.com)**